

ASPERA

F42

User Manual



ASPERA
F42

User Manual

Contents

1.Tech Specs.....	5
2. General Information.....	6
Lost Device.....	6
Safety Warning - Road safety comes first!....	7
Switch off in aircraft.....	7
Switch off before entering risk areas.....	7
Observe all special regulations.....	8
Interference.....	8
Qualified service.....	8
Accessories and batteries.....	9
Headset earphones.....	9
Device Temperature.....	9
Emergency calls.....	10

Precautions.....	11
3. What's in the Box.....	12
4. Getting to know your Aspera F42....	13
5. Getting Started.....	15
Removing back of the phone.....	15
Removing the battery.....	16
Inserting SIM card.....	16
Inserting SD card.....	17
Inserting Battery.....	17
6. Basic Operations.....	18
Powering the device.....	18
Charging the device.....	18
PIN/SIM/PUK Codes.....	19
Keypad Functionality.....	19

Screens and Menus.....	21	Writing Messages	33
Quick Settings and Notifications.....	22	Reading Messages.....	34
Input Methods.....	23	Deleting Messages.....	35
7. Calling.....	24	10. Call Logs/History.....	36
Dialling a number.....	24	Missed Calls/Dialled Calls/Answered Calls	37
Receiving a call.....	25	Clearing All Call Logs/History.....	37
Ringtone Volume.....	26	11. Applications and Tools.....	38
Call Volume.....	27	Clock.....	38
Importing/Exporting Contacts.....	28	Calendar.....	41
8.Contacts.....	28	Camera.....	42
Adding Contacts.....	30	Viewing Pictures and Videos	43
Editing Contacts.....	30	Music Player.....	44
Removing Contacts.....	32	FM Radio.....	45
9. Messages.....	32	Torch.....	46

12. Internet.....	47
13. Settings.....	48
Wi-Fi.....	48
Mobile Data.....	49
Sound and Audio.....	50
Hotspot and Tethering.....	52
Bluetooth.....	54
Display.....	56
14. Security.....	57
15. Basic Troubleshooting.....	60

1.Tech Specs

2.8" FWVGA Display

Quad core 1.1 GHz processor

3G 850/900/2100Mhz

4G Bands 1/3/5/7/28 a+b

2MP rear camera + 0.3MP front camera.

512MB RAM & 4GB ROM

Wi-Fi, Wi-Fi Hotspot

Battery 1350mAh Li-ion

Dimensions: 105 x 56 x 19mm (when closed)

Micro SD card slot expandable to 64GB (Not included)

2. General Information

◦Profile

Please read this manual carefully to help you make the most of your phone. Aspera Mobile may change features of this mobile phone without prior written notice and reserves the final right to interpret the performance of this mobile phone. Due to different software and network operators, display on your phone may be different, please refer to your phone for details.

◦Lost Device

If your phone has been lost or stolen, notify your network service provider as soon as possible and ask for the SIM card to be disabled (network support is required). This can avoid economic loss caused by unauthorised use.

◦**Safety Warning - Road safety comes first!**

Do not use the mobile phone in hand-held mode while driving. Use hands-free fittings when calls are unavoidable while driving. In some countries/states, dialling or receiving calls while driving is illegal, regardless of hands-free status. You will need to ensure you are obeying road safety laws by checking the laws of the state/country you are driving in.

◦**Switch off in aircraft**

Wireless devices can cause interference in aircraft. Please make sure to only use your phone when switched to Aeroplane mode when in an aircraft.

◦**Switch off before entering risk areas**

Strictly observe the relevant laws, codes, and regulations on the use of mobile phones in risk areas. Turn off your mobile phone before entering a place susceptible to an explosion, such as an oil station, oil tank, chemical plant, or a place where a blasting process is under way.

◦**Observe all special regulations**

Follow any special regulations in force in any areas such as hospitals and always switch off your phone whenever it is forbidden to use it or when it may cause interference or danger. Carefully use your mobile phone near medical apparatuses, such as pacemakers, hearing aids and some other electronic medical devices, as it may cause interference to such apparatus.

◦**Interference**

The conversation quality of any mobile phone may be affected by radio interference. An antenna is built inside the mobile phone and located near the microphone. Do not touch the antenna area during a conversation; this will cause conversation quality to deteriorate.

◦**Qualified service**

Only qualified Aspera personnel or approved agents may install and/or repair phone Aspera equipment. Installing or repairing the mobile phone and/or parts by yourself may be dangerous and lead to breakage of warranty terms.

◦ **Accessories and batteries**

The Aspera F42 box will come with an Aspera charger and battery. The recommended charging time for the Aspera F42 is three to four hours when the battery is low or depleted. We recommend to not leave it charging overnight, as this may damage or deteriorate the battery over time.

Please only use Aspera authorised cables, plugs, and batteries for this device.

◦ **Headset earphones**

The Aspera F42 box will include a pair of earphones. Ensure that the earphones are plugged into the jack correctly to ensure clarity in the audio, and that the audio jack is clear of any obstructions or material.

◦ **Device Temperature**

The Aspera F42 can warm up when completing different operations. These operations include, but are not limited to:

- Utilising the wireless and mobile data functionalities for a multitude of purposes, including but not limited to video streaming, video recording, accessing the internet, tethering, and more.
- Using the device for phone calls
- Using the GPS function for navigation or location services
- Using the device in areas with weaker and/or no reception

If the device warms up, we recommend closing apps that are not in use, and to let the phone cool down naturally.

◦**Emergency calls**

Ensure the phone is switched on and has service reception, enter the emergency number (e.g. 000), then press the Dial key. Give your location and state your situation briefly and follow the instructions of service personnel. Do not end the call until told to do so.

The emergency number can be dialled with or without a sim card installed.

•Precautions

This mobile phone has an intricate design, so please exercise special care when using it.

The following suggestions will help your mobile phone survive the warranty period and extend its service life:

- Keep the mobile phone and all its fittings beyond young children's reach.
- Keep the mobile phone dry. Keep away from rain, moisture, liquid or other substances that may corrode electronic circuits.
- Do not use or store the mobile phone in dusty places, lest that active parts of the mobile phone be damaged.
- Do not store the mobile phone in a high-temperature location. High temperature may shorten the life of electronic circuits and damage the battery and some plastic parts.
- Do not store the mobile phone in extreme cold places. This will cause moisture to form inside the mobile phone and may damage electronic circuits when the mobile phone is moved to a constant temperature place.

- Do not throw, knock or shock the mobile phone, as that may cause damage to the internal circuits and high-precision components of the mobile phone.

3. What's in the Box

The Aspera F42 comes with the handset, battery, earphones, USB cable, wall plug, user guide, and warranty information.

Earphones – Our Aspera F42 has a standard 3.5mm head jack, allowing for audio functions including music, videos and calls. The earphones also have a built-in microphone, and can be used for calls

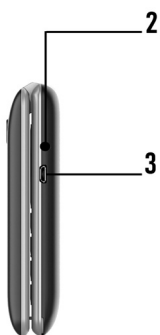
USB cable – Can be used with the wall plug to charge the phone. Can also be used to connect your device to a Windows computer for file transfers and further functionality.

Wall Plug – Connects to a power outlet and used in conjunction with the USB cable to charge the phone.

4. Getting to know your Aspera F42



1. External microphone
2. Camera
3. Flashlight/torch
4. External display
5. Internal camera
6. Speaker
7. Start of numerical/typing keypad
8. Top Left-hand "context" key/button
9. Central "Select" key/button
10. Top right-hand "context" key/button
11. Directional arrow keys/buttons (around Select key)
12. Red "Hang up" key/Power on-off button
13. Green "Dial/Answer" key/button
14. Hash key/ "Vibrate mode" activation key/button
15. Camera shortcut
16. Internal microphone
17. Asterisk/Star key/button
18. Asterisk/Star key/button



Profile view

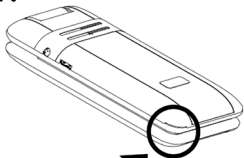
1. Volume up/down keys
2. Headphone port
3. Micro-USB charging port

Back (closed)

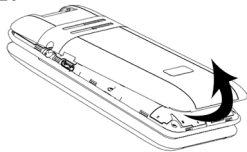
1. Back speaker
2. Back indent



1.



2.



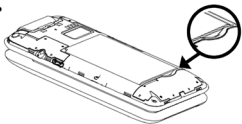
5. Getting Started

Removing back of the phone

The indent to remove the back cover can be found in the bottom left-hand corner of the back cover, as indicated in the diagram to the left.

1. Apply firm but gentle pressure to the corner and begin to lift from the indent.
2. Gently lift other corners and continue around the edges until the entire panel is removed.

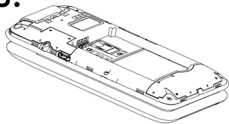
1.



2.



3.

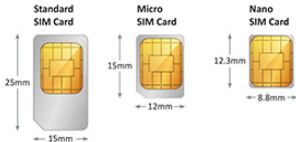


Removing the battery

1. Using the indent on the bottom right-hand side of the battery, apply pressure and slowly begin to lift
2. As the battery releases, continue to lift until it is completely detached from the phone as seen in (3).

Inserting SIM card

The Aspera F42 takes a nano-SIM, please see the diagram below for sizing information. This is the smallest sim card.





Place the nano-SIM into the slot **(1)**, matching the angled corner in the top right-hand corner. The SIM should slide into the tray, underneath the metal plate and into its correct position.

Note: You should only need gentle pressure to lock the SIM in position. If it feels difficult to lock into position, please remove from the tray, ensure the SIM card is sitting correctly and begin the process again.

Inserting SD card

Angle the micro-SD card and insert into slot **(2)**, please ensure the card is positioned correctly.

The Aspera F42 can take a micro-SD card up to 64GB.

Inserting Battery

Match the pins at the top of the phone **(3)** with the metal contact points on the battery. Slide the battery in from the top of the phone, then replace the cover.

6. Basic Operations

Powering the device

Hold the red hang-up/power button for five seconds. Once the screen lights up with the Aspera logo, let go of the button. The phone may take some time to initialise. This is normal and you may need to wait for a while.

Charging the device

Ensure the wall plug has been placed into a working outlet and the power switched on. Connect the larger end of the USB/Charger cable to the wall plug, then connect the smaller end to the right side of the phone.

We recommend charging the phone only when the battery is near empty, or when necessary. It will take three to four hours for the battery to charge from depleted to full.

PIN/SIM/PUK Codes

If enabled, the system will require a PIN code before anything can be accessed. This is a security code placed on the SIM card and may have been transferred from a previous device.

If you enter the incorrect PIN code three times, it will lock the SIM and ask for a PUK code. This PUK code can be retrieved from your telecom provider.

Instructions to enable the PIN code can be found in the “Security” section of the manual.

Keypad Functionality

The arrow keys are predominantly used to move around different screens and options. Most of the time, your selection will be highlighted to help you differentiate between your selection and the rest of the screen. These arrow keys can be used to scroll between different options.

There are three main command keys most commonly used to navigate through the menu and functions. The top left-hand and right-hand “context” keys will change commands when highlighting over different menus and options. If these keys do not have commands reflected on the screen, the general functions of these keys are:

- Right Context key: This is the “back” key to return to a previous page
- Left Context key: This is an “options” key and will open advanced options/settings when pressed in most applications

The Select key is primarily used to enter into selections highlighted by the arrow keys. Please be aware of where you are pressing when using the arrow keys, as you can accidentally hit the Select key and unintentionally enter a different menu/screen.

Your camera/messaging/contact shortcut keys allow you to access these applications in a faster way than navigating to them with the arrow and select keys. These key operations cannot be changed. To activate/deactivate vibrate only, hold the hash key for two seconds.

To quit any application and return to the home page, press the red hang-up key once. Please note that if you do this during a phone call, you will end the call.



Screens and Menus

When opening the phone, the Aspera F42 will open to the Home page. Here you will see the wallpaper and three commands across the bottom of the screen which are set to the three main command buttons on the keypad (see Keypad Functionality). The bottom left command reads “Notification” while the right-hand side is “Back”. In the centre is a circular icon which is launched by using your Select key. This command will open the phone applications menu where all applications and functions can be accessed. There are multiple pages of the menu, each filled with various applications for different utility and design.

You can use the arrow keys on the device to navigate between these different menu screens and applications.

To select and enter into a particular application and/or option, press the “Select” button, located between the arrow keys.

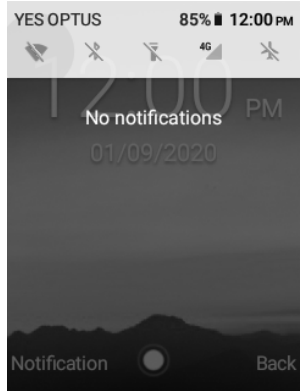
Quick Settings and Notifications

You can quickly access common settings such as Wi-Fi, Bluetooth, Flashlight, and Mobile Data by pressing the top left-hand context key labelled “Notification”. In this screen there is a “Quick settings” task bar across the top of the page as well as your notifications which can be opened from this screen by scrolling and selecting the alert.

At the top of the page, you can highlight the quick setting options by using the arrow keys to select between the different options. The icons will be highlighted in a light grey to indicate which function is being selected.

To enable/disable these, press the Select key once the option is highlighted.

To enter into the advanced settings for the for these functions, highlight the icon, then press and hold the Select key for three seconds.



Input Methods

The Aspera F42 comes with three different forms of input through the keypad: Numbers (indicated by 123), letters (indicated by ABC, Abc or abc), or predictive text (indicated by T9).

When you are in a field where you can type, you will see the selected input method appear as an icon on the bar located on the very top right-hand side of the screen.

To change between these forms of input, push the hash (#) key to change between input methods when texting/typing.

To insert symbols, click the asterisk/star (*) key to open up a list of symbols, the arrow keys to select the appropriate symbol, and the select key to insert the symbol selected.

7. Calling

Dialling a number

To dial a number that is not on your contact list:

- Open the phone to the home screen
- Enter the number you wish to dial with the numbers on the keypad
- Once this number is correct, press the green “Dial” button

To dial a number that is on your contact list:

- Open the phone to the Home screen
- Access the Menu by pressing the Select key
- Use the arrow keys and select “Contacts” to launch the application. Once the application is open, your contact list will be displayed.
- Use the arrow keys to scroll through your contacts and use the select button to view the contact details.

- Once the selected contact page has opened, click on the “down” arrow key until the phone number is highlighted in green
- Press either the green “Dial” button or Select key to make a phone call

To disconnect from a call, you can either close the lid or press the red “Hang-up” button.

Receiving a call

If the phone lid is closed:

- Open the phone normally. You will not need to press any buttons; this automatically answers the call unless you have changed this setting.

To change whether or not the call is answered by opening the phone, open the applications menu, open the “Phone” application, press the top-left context key, select “Settings”, select “Calls”, scroll to “Flip setting”. The switch bar on the right will indicate if the auto-answer function is selected or not.

If the phone lid is open and you are using the phone:

- The screen will change, showing the caller's name (if on contacts) or phone number.
- Press the green "Dial" key to pick up the call or press the top left-hand key which shows "Answer".
- You also have the option to reject the phone call by pressing the red "hang-up" button.

Ringtone Volume

There are two ways to change the ringtone volume.

One way is to use the volume keys on the left-hand side of the phone to change the ringtone volume.

To do so:

- Open the phone to the home screen
- Use the volume keys to adjust the ring volume.
- You will see a volume bar across the top of the screen. Once you are satisfied with the level of the ringtone, do not press the buttons further, and the volume screen will eventually disappear.

The other way is through the settings. To do so:

- Open the phone to the menu screen
- Use the keypad to scroll to and select “Settings”
- Use the keypad to scroll down to and select “Sound”
- You will see three different volumes for Media, Alarms and Ringtones. Use the down arrow to highlight and select “Ringtones”.
- You can then use the left and right keypad to adjust the volume. When moving the slider to the left, this decreases the volume. When moving to the right, this increases the volume.
- Once you are happy with the volume that is being demonstrated, you can press the red “hang-up” button to return to the home screen.

Call Volume

The call volume can only be adjusted when you are in a phone call. To do so:

- When in a phone call, use the volume buttons on the right-hand side of the phone to adjust the call volume.

8.Contacts

Opening the Contacts application:

- Open the phone to the home page
- Press the green “Dial” button, this will launch the shortcut to your contacts
- There will be a search bar at the top which can be used to find a contact. Below the bar there are three icons; the star is your “favourites”, the clock-shaped icon is your recent call log and the one on the right is your contact list. You can use your arrow keys to change between these pages.

Importing/Exporting Contacts

You can choose to import contacts from a pre-existing back-up on a SD card or the SIM card to save onto your device. To do this:

- Open the menu page and select “Contacts”
- Using your arrow keys, select the icon that has three horizontal lines on the top left of the screen
- Scroll down and select “Settings”

- Scroll down and select “Import”

From here, you can choose whether to import from the Phone, SD card or SIM card (USIM).

- Highlight the option you wish to choose and press the Select key. This will mark your selection, as indicated by the circle on the right side of the name.
- Press “Next”.

On this next screen, you can choose where you wish to copy the contacts to.

- Hover over the option you wish to choose and press the Select key, then press the top right-hand key labelled “Next”.
- You can now select the contacts you wish to copy to the phone. Use the keypad to move up and down and choose your contacts with the Select key.
- When you have selected all the contacts you wish to copy, press the top left-hand key labelled Options, then select the “Done” option with the Select key.
- This will return you to the Settings page, and all the selected contacts will be copied over.

Adding Contacts

- Ensure you have opened the Contacts application as per instructions above.
- From the contacts screen, use the arrow keys to highlight and select “Create New Contact”
- From here, you can enter in the information by using the letters on the keypad and move between the different fields by using the arrow keys.
- Once you are finished with what you have entered, scroll to the top of the page until the “Save” icon in the top right-hand side of the page is highlighted, use your select key to confirm. Your new contact has now been saved to your contacts.

Editing Contacts

- Ensure you have opened the Contacts application as per instructions above.
- Use your arrow keys to highlight the magnifying glass, this is the “Search” button. Once highlighted, use your select key to search contacts
- Use the arrow keys to highlight the contact you wish to edit, then press the select key
- You will now enter into the contact information and call log.

In the top right-hand side of the screen there is a pencil-shaped icon which is the “Edit” function.

- You can change the information fields now. Once you have finished editing the contact details, use your arrow keys to highlight the top right-hand button labelled “Save”.

Other functions you can access from your contacts are:

- Make this contact a “Favourite” by clicking the Star icon next to the editing option. This makes the contact accessible quickly from your home screen by pressing the green “Dial” button.
- Send this contact a text message by selecting the “Message” icon located to the right side of the phone number.
- Scroll down on the contact detail screen to view your calling log of incoming/outgoing calls made to this phone number.

You can view further settings and options by clicking the top-left “context” button. From here you can “Link” contacts, “Delete” contact, “Share” contact, set a custom ringtone or “Route to voicemail”.

Removing Contacts

- Ensure you have opened the Contacts application as per instructions above.
- Use the arrow keys to highlight and select the contact you wish to delete.
- Press the top-left context key, this will bring up further options
- Scroll down to “Delete”
- Confirm that you want to delete the contact by ensuring the “Delete” option is highlighted on the screen. To proceed with the deletion, press the Select key.

9. Messages

Messages carried through the SMS and MMS network can be sent and received within the Messaging application. To open the Messaging Application:

- Open the phone to the menu
- Use the arrow keys and select key to move to and select “Messaging”.
- This will take you to your conversation threads, you can use your arrow keys to scroll through your threads on this screen

Writing Messages

Please note that you may need to change between different input methods in this section. To do so, use the hash (#) key to cycle between input methods when on a field which you can type in.

- Ensure you have opened the Messaging application as per instructions above.
- Press the left-hand context button labelled as “Options”
- “New Message” is the first option highlighted, press the select key

You will land onto a new screen, with your cursor highlighted over the Name/Number input field for the contact. There are multiple methods to choose a contact:

- If you do not have the contact saved, you can enter in the number using the “123” input method. Once this number has been entered, you can shift the cursor to the text message field by pressing the down arrow key twice.
- If you do have the contact saved, you can enter what their name using the “abc” input method. You will see their name come up underneath, with their number showing. To choose this particular contact, use the down and up arrow keys to highlight the correct contact, then press the Select key.

Once this is done, the contact will be added to the message and the cursor will automatically be placed in the text message field.

Once you are in the text message field:

- Type in your message using the input method you prefer. (See Input Methods).
- Once you have finished your message, move to and select the right-facing arrow to send.
- If you wish to attach a file, you can use the arrow keys and Select key to select the paperclip icon “Attach”. Then use the arrow keys and Select key to choose what you would like to send by navigating through the various options and selections.
- After the file has been attached, you can then send the message by using the arrow key to move to the right-facing arrow icon and the select key to send.

Reading Messages

Messaging conversations are referred to as “Threads” and are displayed in a log form. This allows both your received and sent messages to be viewed in one place.

- Ensure you have opened the Messaging application as per instructions above.
- Use the arrow keys to select the thread you wish to read in full detail and press the Select key to open.
- Once you are in the message, you will have the option to respond or read the entire conversation thread. To read the conversation thread, press the up arrow once, and you are now able to scroll with the arrow keys to read the rest of the conversation.
- To return and type a text message, simply head to the end of the message by holding the down arrow key until the input option appears again.

Deleting Messages

To delete a message:

- Ensure you have opened the Messaging application as per instructions above.
- Scroll to the conversation thread you wish to delete
- Once it is highlighted, select the “Options” key with the left-hand context button
- Select the Delete Message option and confirm with the Select key.

To delete all messages in a particular folder:

- Ensure you have opened the Messaging application as per instructions above.
- Press the Options key and select the Delete All Threads option
- Confirm with the Select key.

10. Call Logs/History

The call log can show a record of all calls sent and received.

There are two methods to enter into this application:

- Open the applications menu
- Use the arrow keys and select key to move to and select “Phone”.

Alternatively, you can access this page by starting on your home page and pressing the green “Dial” button.

Missed Calls/Dialled Calls/Answered Calls

Ensure you have opened the Phone application as per instructions above.

- Use the arrow key to move to the middle page, the icon of the clock should be highlighted, this is your call log.
- You can use the arrow keys to select between logged calls and use the Options key to interact with the particular number.
- Options include calling back, messaging the number, view the call details or blocking the number (only available if the number is not private).
- To view your “Call History”, while on this page, press the left-hand context button. This will bring up two options, select “Call history” with your select key. From here you will be able to switch between two screens, the left is “All” calls, the right is “Missed” calls.

Clearing All Call Logs/History

Ensure you have opened the Call History page as per instructions above.

- Press the left-hand context key and select “Clear call history”, confirm by highlighting the “OK”

option and pressing the Select key again.

11. Applications and Tools

Clock

To open application:

- Open the menu
- Use the arrow keys to scroll to “Clock”
- Press the select key to open

The Clock application has four main functions which are displayed across the top of the screen once the application is launched. From left to right the icons displayed are:

- Alarm clock
- World clock/time and date
- Timer
- Stopwatch

You can use the arrow keys to switch between the function pages, the icon on the top bar will be highlighted to reflect which function you are viewing.

To add a new alarm:

- When in the alarm screen, scroll down to the bottom of the screen and select the plus button in the middle (select key) to add a new alarm.
- To change the time of the alarm, use the down and up arrow keys to modify the time setting which is highlighted. To change between the hours, minutes and AM/PM, use the right and left arrow keys. Changes to the alarms will be saved automatically, so you can click the right context button to exit the application once complete or scroll down to add more alarms.

Enabling/Disabling an alarm:

- When in the alarm screen, use the arrow keys to scroll through the alarms. There are two separate icons on the right of each alarm which can be selected. The toggle icon will indicate whether the alarm is enabled or disabled.

- Using the select key, the toggle will switch either to right and turn red (enable) or to the left and turn grey (disable).
- Once enabled, there will be a pop-up display on the bottom of the screen indicating the alarm has been enabled for the set time in advance.

Editing an alarm:

- When in the alarm screen, use the arrow keys to highlight the downwards-facing arrow to the right of the alarm you wish to edit. Press the select key to open the drop-down menu to edit the details of the alarm.
- From here you can use your arrow keys to edit the time, days of the week and other features of the alarm. Use your select key to confirm any changes and click on the upwards-facing arrow to close the editing menu. The changes will be saved automatically.

Calendar

The calendar can be used to add events and reminders to your phone. To use this functionality:

- Open the main menu
- Use the arrow keys and select key to move to and select “Calendar”.

To create a new event:

- When in the Calendar application, use the arrow keys to highlight which date you would like to add the event.
- Press the select key to open the “New Event” and using your keypad, type the name of the event.
- The event can either be saved with just a name by selecting the “Save” icon in the bottom right-hand side of the window, otherwise you can select “Edit” on the bottom left-hand side.
- If “Edit” is selected, the event can be saved with further details such as location, time duration, description, set reminders and event repetition. Use the arrows and select keys to add relevant information.
- Once all the details have been added to the event, scroll to the top of the screen and select the top-right icon “Done”. This will save the event to your calendar.

To view events in the calendar:

- When in the Calendar application, scroll to the date of the event and select to view the event details.
- Alternatively, when in the calendar application press the left-hand context key to open more options.

From here you can scroll down to “Search” and enter a key word to search for an upcoming saved event.

Camera

To access the Camera application:

- Open the phone to the menu
- Use the arrow keys and select key to move to and select “Camera”.

Camera Controls:

- Capture: Select Key
- Zoom: Up and Down Keys
- Gallery: Left arrow key then press Left-hand context key

- Video mode: Right arrow key then press Right-hand context key

For additional settings, such as timer, resolution and flash:

- In the Camera Application, press the top left-hand context key to open options.
- Use the arrow keys to highlight the particular option you wish to change and press the Select key to enter further selections.
- Use the arrow keys and Select key to select and confirm which setting you want.

Viewing Pictures and Videos

You can use the Aspera F42 to view certain photos and videos. This includes downloads, media transferred from the computer, and any media captured on the Camera application. You will need to access them through separate applications.

To access pictures and photos:

- Open the menu

- Use the arrow keys and select key to move to and select “Gallery”
- In Gallery, you can use the arrow keys to navigate around the screen and use the select key to enter folders. You can also use the select key to open up highlighted photos and pictures.

Videos will be stored automatically in the “Camera” folder and can be played here by selecting the file. They can also be found and played in the “Videos” application.

To access the “Videos” application:

- Open the phone to the menu
- Use the arrow keys and select key to move to and select “Videos”

Music Player

You can transfer music files to the Aspera F42 through the computer or SD card. To access and play these music files:

- Open the phone to the menu

- Use the arrow keys and select key to move to and select “Music”
- The files will be listed in four different categories which can be seen across the top bar menu of the screen (Artists, Albums, Songs, Playlists).
- To change categories, use the arrow keys to highlight the relevant icon and press the select key to view.
- To play a song, use the arrow keys to highlight the song you wish to listen to and press the select key to begin playing.

FM Radio

To connect and use the FM radio on the Aspera F42, you will need to connect a pair of earphones to work as an antenna.

Once your earphones are connected through the audio jack on the phone, you can launch the FM Radio. To launch the radio application:

- Open the menu
- Use the arrow keys and Select key to move to and select “FM Radio”

- Once launched, there will be a control bar with five icons to allow you to scan through the frequencies. Use the arrows and select keys to tune to your preferred station. The single arrow icons (</>) can be used to change the frequency manually, the outer icons can be used to automatically tune the stations. The Star icon in the middle of the controls is to save the radio station as a “Favourite”.
- To adjust volume, use volume control keys on the left side of the handset.
- The three icons on the top right-hand side of the screen access extra functions such as a list of radio stations, sound output (earphones or loudspeaker) and recording function. These can be selected by using your arrow keys and select key.

Torch

To access the torch function:

- Open the phone to the home page
- Press the left-hand context key labelled “Notification”
- Scroll to the top tool bar and use the arrow keys to highlight the third icon (shaped like a torch).
- Use the select key to turn the torch on and off.

12. Internet

The Aspera F42 features an internet browser which can use either Wi-Fi or Mobile Data to access numerous websites across the internet.

To enter into the Browser:

- Open the menu
- Use the arrow keys and select key to open “Browser”.

The default home page is Google, which is a commonly used search engine.

To navigate the mouse cursor, use the arrow keys. Once the cursor is hovered above a button, use the select key to press it. Please note that the keypad is automatically disabled while using the mouse cursor until a typing field has been selected.

13. Settings

You can make multiple configuration changes with the device within this application.

To access the Settings application:

- Open the menu
- Use the arrow keys and select key to move to and select “Settings”.

Wi-Fi

- When inside settings, select “Network & Internet”
- Scroll down to Wi-F, use the select key to enter into Wi-Fi options.
- If switched off, use the select key to enable Wi-Fi to see all the networks around you.
- Use the arrow key to navigate to the wireless network you wish to connect to. Press the Select key once on it to begin the connection process.
- If this wireless network requires a password, you will need to input the correct password to connect successfully. Use the arrow keys and the Select key to navigate between the fields.

Mobile Data

Mobile data can be enabled so you can access internet services when out of wireless network connectivity. Please note that you will need a valid mobile plan to access mobile data, and that charges may occur when utilising mobile data services.

To enable Mobile Data usage:

- When inside settings, select “Network & Internet”.
- Scroll down with your arrow keys and select “Data Usage”.
- Go down with your arrow keys and highlight the “Mobile Data” option.
- To enable/disable this option, press the Select key.

Note: This option can be accessed in the Quick Settings panel.

Within these settings you can also view your data/Wi-Fi usage.

Sound and Audio

You can make changes to ringtones, volumes and other associated settings from this option.

- When inside settings, select “Sound”.

Your first three options are Media, Alarm, and Ring volume.

- Media is for the volume of videos and music that would be playing through your device.
- Alarm is for the volume of any alarms set on your device.
- Ring is for the volume for the ringtone to notify you of incoming calls and messages.
- To change any of these, highlight the respective options with the up or down arrow key, then use the left and right arrow keys to adjust the slider until you are satisfied with the volume levels.
- When adjusted to your liking, simply press the top right-hand context button to leave the Sound settings or press the up/down arrow keys to select a different option to change.

“Also vibrate for calls” is a setting which can be enabled/disabled depending on whether you would like the phone to vibrate when receiving calls.

“Phone ringtone” is the tone that plays when you receive a call, this can be changed to something different. To do so:

- Highlight the Phone ringtone option, and press the Select key
- A new window will appear showing a variety of different ringtones. Use the up and down arrow keys to select a different ringtone.
- If you hover over a ringtone, it will play a preview of what the ringtone will sound like.
- To select a ringtone, use the Select key.
- Once selected, the changes will be automatically saved.

“Default notification sounds” refers to the ringtone played when you receive a notification such as a text message or missed call. “Default alarm sound” is the sound the alarm will make when enabled. Both of these ringtones can be changed using the same steps used to change the Phone ringtone.

Hotspot and Tethering

The Aspera F42 can be used as a portable hotspot to connect other devices to the internet, using the mobile data on the SIM card you currently have in the F42.

Please note that when other devices connect to your hotspot, this will consume mobile data on your SIM plan so charges may occur when utilising mobile data services.

To view the name and password for the Wireless hotspot:

- When inside settings, select “Network & Internet”.
- Use the arrow keys to scroll down and select “Hotspot & Tethering”.
- Use the arrow keys to scroll down and select “Wi-Fi hotspot”
- Use the arrow keys to scroll down and select “Set up Wi-Fi hotspot”

It is important to ensure that you know the password and only give the password to those you wish to access your mobile hotspot.

- The default name of the Wi-Fi hotspot is “Aspera F42”.
- You can view the password by scrolling down to the “Show password” option, and tick the box using the Select key.
- After this option has been enabled, use the arrow key to scroll up and view the password.
- You will need to select “Cancel” or “Save” before exiting this screen.

To enable the hotspot to allow devices to connect to the Aspera F42:

- When inside “Wi-Fi hotspot”, highlight the “Off” option, and use the Select key to enable.
- To disable the hotspot, highlight the “On” option and use the Select key to disable.

You can also choose to tether the phone to a computer to access the internet on your computer using either a micro-USB connection or Bluetooth.

To connect using USB tethering:

- Connect the Aspera F42 to the computer with a micro-USB cable
- Open the “Hotspot & Tethering” settings

- Using the select key, press “USB tethering” to enable this connection

Bluetooth

- When inside “Hotspot & Tethering”, scroll down to “Bluetooth tethering”
- Using your select key, press to activate Bluetooth tethering

Ensure that Bluetooth is turned on so you can access more options and pair devices.

To access Bluetooth:

- Open the “Settings” menu
 - Scroll down and select “Connected Devices”
 - Make sure “Bluetooth” is highlighted and use your select key to enable. This will open a screen with more functions and allow you to select whether the Bluetooth is “On” or “Off”.
- In these settings you can change your “Device name” which will be visible to other devices when Bluetooth is enabled. To do this, scroll and select this option to open a typing field for you to input your new device name. Please note that you must select “Rename” for these changes to be saved.

“Received files” is the history of files that have been transferred through Bluetooth and can be viewed by selecting that function.

To connect to a device:

- Using the arrow keys, scroll down to “Pair New Device” and press the Select key.
- Wait for the device to find the relevant Bluetooth device name, then use the arrow keys to highlight the device and press the Select key.

You can allow the device you are connecting to access to your contacts and call history by pressing the Select key to enable this option. Alternatively, you can leave it unchecked.

Use the left arrow key once to navigate to the option called “Pair” and press the Select key once. This will pair the device and you will be able to utilise the Bluetooth connection for multiple purposes.

Display

The display settings has multiple options which can be customised or adjusted for the user. These settings allow changes to display features including menu layout, Wallpaper, shortcuts, sleep mode and font size.

To access Display settings:

- When inside settings, use the arrow key and select “Display”

From here you can choose which feature or functionality you would like to make changes to by using your arrow keys and pressing the select key to access the settings. Screen brightness and inactivity (Sleep) can also be found in this menu.

To adjust the screen brightness level:

- Use the arrow keys to scroll down and select “Brightness level”. You will see a bar appear at the top of the screen.

- Use the left and right arrow keys to adjust the brightness level until appropriate.
- Once you are happy with the level, press the top right-hand context key to save the changes and return to the Display setting screen.

To adjust the period of inactivity before the screen switches off:

- Scroll down and select “Sleep” to view the set options.
- Use the down and up arrow key to choose a preferred time interval. Press the Select key on the relevant selection and this will save the selection and bring you back to the display menu.

14. Security

The Aspera F42 has the ability to set a phone lock and a SIM card lock on system start-up. There is no functionality for a password for when the phone lid is closed.

The phone lock is a password used to enter the phone during system start-up.

To set this up:

- Access the Settings applications, located on the second home screen
- Scroll down to and select “Security & location”
- Select “Screen lock”
- You can then enter a PIN code and save it with the keypad.

NOTE: If you lose this PIN code you may lose access to the phone, and consequently all data. Please ensure that if you do set a PIN code that it is remembered or stored safely somewhere. Aspera Mobile take no responsibility for any locked devices due to PIN codes being lost.

The SIM card lock can be enabled or disabled by:

- Access the Settings applications
- Scroll down to and select “Security & location”
- Go down to and select SIM card lock
- When highlighting Lock SIM card, use the Select key to toggle this option

- You can proceed to either set a SIM PIN code to enable the option, or to enter an existing SIM PIN code to disable the option

You can change the SIM PIN (if a PIN code has been assigned) by highlighting and selecting Change SIM PIN.

Please note that if you lose the SIM PIN or fail three times at entering the SIM PIN, this means that the SIM card can be blocked, and you will require a PUK code to be able to unlock the SIM. To retrieve the PUK code, you will need to contact your SIM provider as Aspera Mobile do not carry these PUK codes.

15. Basic Troubleshooting

My phone is not charging:

- Please ensure that you are using the wall plug and USB charger cable provided with the device, as we are unable to certify whether other plugs will work correctly.
- Please ensure the wall plug and cable are connected properly, and that the power has been switched on.
- Ensure the cable is firmly connected to the phone.
- Double check that the battery has been inserted in the correct orientation, and that the battery is fitting in correctly, not swollen, and has not been damaged in any way.

My phone refuses to turn on:

- Double check that the battery has been inserted in the correct orientation, and that the battery is fitting in correctly, not swollen, and has not been damaged in any way.
- Please ensure you are holding the red power/hang-up button for five seconds, as it does take some

time for the device to power on.

- If the battery has not been charged in some time or is flat, please connect and charge for at least ten minutes as it may take some time for the battery to regain sufficient charge to power the device.

My phone is not connecting to the network, even though a SIM card has been inserted:

- Please ensure the SIM card is making a solid connection with the SIM tray, and that the SIM tray has been locked into position to ensure the SIM card will not slide around.
- If the SIM card is new and has just been activated, it may take two business days for the SIM card to fully start working. You will need to restart the device before the SIM card can connect to the network if this is the case.
- If your SIM card is over twelve months old and has been moved between different devices, wear and tear can be a concern. You are able to order a replacement SIM free of charge from your SIM card provider if this is the case.
- Please check the signal strength within the area you are making your call. Depending on tower availability and coverage, you may be within a blackspot.

My battery is not lasting very long:

- The expected battery life on a full charge of the Aspera F42 is three days standby, or a day with moderate usage of the phone. Heavy use may mean you need to charge the battery in the same day.
- The expected lifespan of the battery is five hundred charging cycles before the capacity begins to diminish. Depending on how often you charge your device, you may reach this limit faster or slower.

People dialling in are told either my phone is busy or is immediately directed to Voicemail, even though my phone is available to receive a call:

- Please ensure all call diversions have been disabled. You can do this by following the prompts from your SIM card provider, as each SIM card has a specific code to enter in to disable particular diversions.
- Please ensure the number has not been accidentally placed on the block list. To see whether a number has been placed into the blocklist – go into Call History and select Missed Calls. Press the top-left hand context key labelled “Options” and select Settings. After entering settings, select Call Blocking, and see if the contact that is trying to contact you is on this list.



ASPERA

www.asperamobile.com